

# LEVALIGN®

Measure surface flatness with precision and convenience

## Level foundation for better machine availability and productivity

LEVALIGN® quickly and accurately measures any foundation, consequently improving machine running time and productivity. Using the supplied PC software it provides comprehensive graphical and numerical measurement data reports. The system is

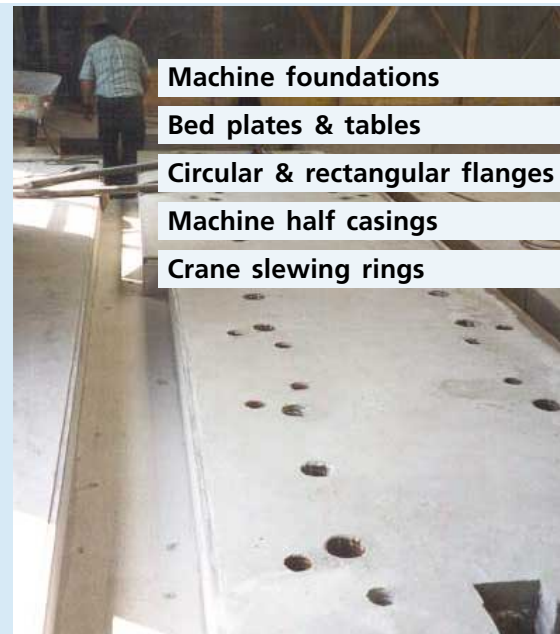
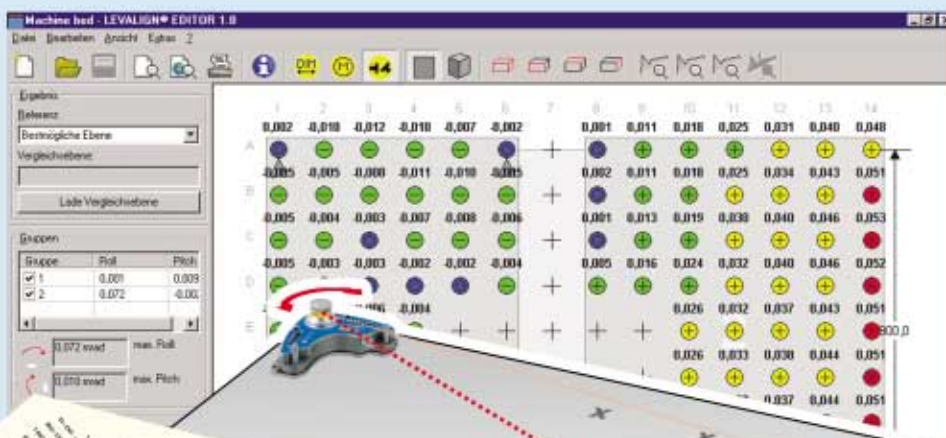
available as an add-on module to the proven ROTALIGN® PRO system. Because it utilizes the ROTALIGN® sensor and computer, LEVALIGN® is an affordable and highly versatile new geometric package - yet another addition to the PRÜFTECHNIK product range.

## For OEMs, maintenance and service



LEVALIGN® laser

## Clear and concise handling



- Machine foundations
- Bed plates & tables
- Circular & rectangular flanges
- Machine half casings
- Crane slewing rings

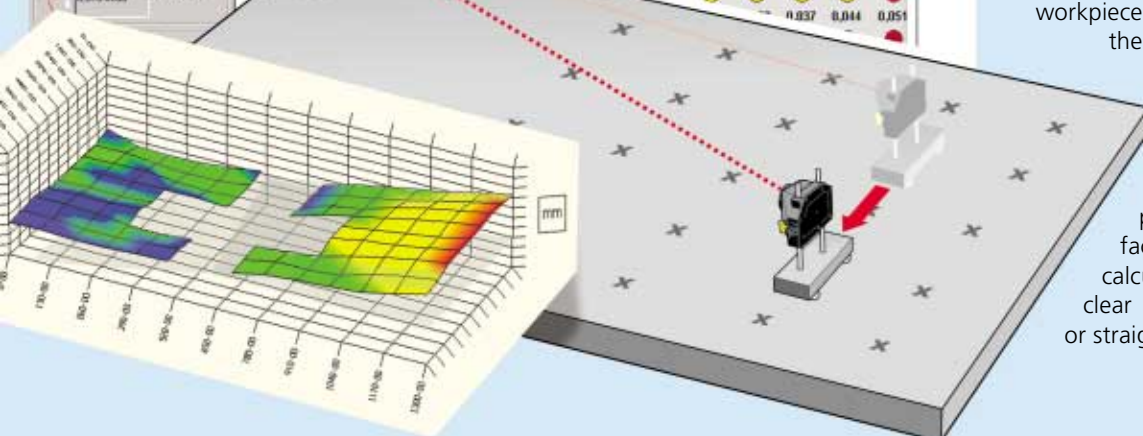
A level machine foundation eases the positioning of machines thus guaranteeing a trouble free production process.

## Advantages at a glance

- ⊗ Complete hardware and software package
- ⊗ InfiniSplice™ measurement for infinite number of points and surface area
- ⊗ Select any number of fixed/reference points
- ⊗ Present result values as positive, negative or both positive and negative
- ⊗ Cost effective upgrade for existing ROTALIGN® PRO customers

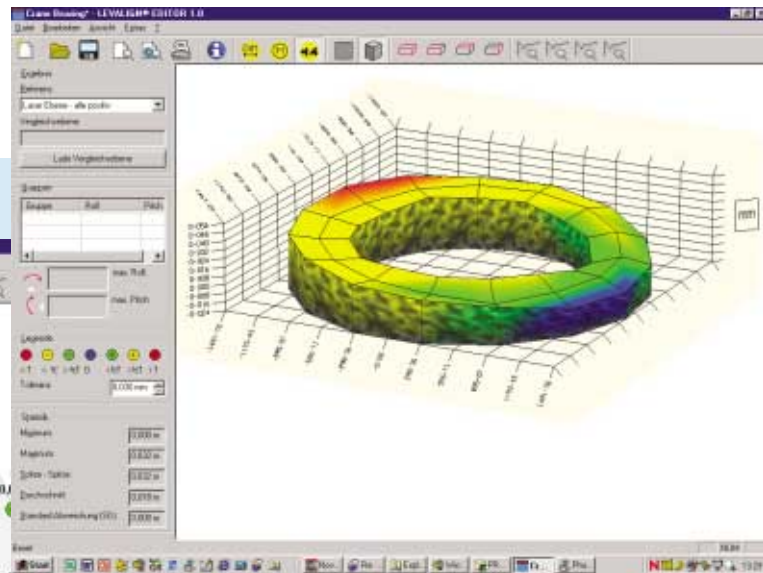
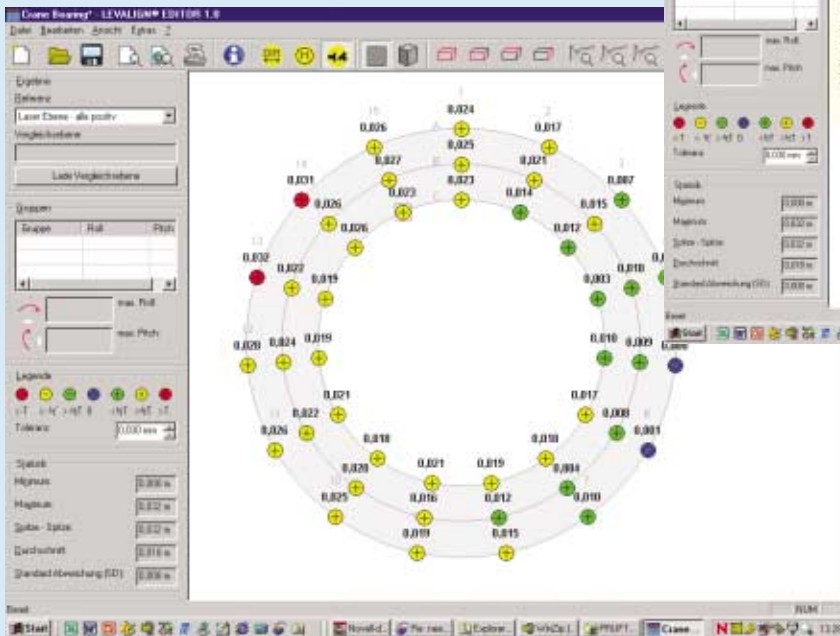
## Straightforward measurement procedure

Simply mark a surface grid on the workpiece to be measured. Position the sensor at each grid point; by the press of one key a measurement is taken and stored in the ROTALIGN® PRO computer for each location point. The difference in surface profile at each point is calculated and displayed with clear notation of surface flatness or straightness.



# LEVALIGN® PC software

Complete evaluation  
and documentation



## 3-D graphic display shows surface profile with user tolerances

The supplied user-friendly software provides 2-D and 3-D graphic displays with selection options to fix or unfix datum points and areas. The facility to customise data reports into specific user format including company logo and photo makes the software package a valuable tool for documentation.

## LEVALIGN laser emitter technical data

Laser	GaAlAs semiconductor laser
Wavelength	670 nm (typical)
Beam diameter	approx. 5 mm
Beam divergence	< 0.2 mrad
Beam power	< 1 mW
Accuracy	< 0,02 mm/m
Measurement range	20 m radius; range has no limit when using InfiniSplice™ from the LEVALIGN Editor
Protection	IP 52
Laser safety class	Class 2; FDA 21CFR 1000 and 1040
Safety precautions	Do not look into laser beam
Power supply	9V block battery, IEC 6LR61 (alkaline or lithium)
Operating time	50 hours continuous depending upon battery type
Temperature range	-5°C – 50°C (23°F – 122°F)
Weight	approx. 2,8 kg

## A case for all seasons

The stand alone LEVALIGN® case comprises of LEVALIGN® laser single plane, ROTALIGN® PRO computer, ROTALIGN® PRO receiver, and mounting brackets. The lockable and durable case has been designed to accommodate standard shaft alignment components as well.



## The complete package

ROTAGLIGN® PRO is also used for shaft, bore and bearing pocket alignment. Detailed information about the respective ROTALIGN® PRO shaft and bore alignment functionalities are available in the two brochures that we will be pleased to send you.



For more information check out our website  
[www.pruftechnik.com](http://www.pruftechnik.com)



PRÜFTECHNIK Alignment Systems  
Oskar-Messter-Straße 15  
D-85737 Ismaning, Germany  
Phone: +49 (0)89-99616-0  
Fax: +49 (0)89-99616-100  
eMail: [info@pruftechnik.com](mailto:info@pruftechnik.com)

Productive maintenance technology